



GS 2/62 H

POWER MAX	WATER LIFT	AIRFLOW	TANK CAPACITY
2400 W	2470 mmH ₂ O	420 m ³ /h	62 l

CARATTERISTICHE ESCLUSIVE

- ▶ INNOVATIVE GASKET
- ▶ STRONG HOOKS
- ▶ SCREWING CONNECTION
- ▶ INDIPENDENT MOTORS WITH LIGHT SWITCHES
- ▶ M & H FILTER CLASSIFICATION
- ▶ MICROFIBER BAG
- ▶ MULTI STAGE FILTRATION
- ▶ DOUBLE STAGE MOTORS AND TURBINE
- ▶ RELIABLE CONSTRUCTION FOR INTENSIVE USE
- ▶ COMPLIANCE WITH CLASS H CERTIFICATION
- ▶ HEPA H13 CARTRIDGE AND FILTERS SURFACE AREA
- ▶ FILTER OVERPRESSURE INDICATORS
- ▶ SAFETY DISPOSAL SYSTEMS
- ▶ RESISTANT FRAMEWORK AND INLET PLUG FOR SAFE TRANSFER



MOST FREQUENTLY USE



INNOVATIONS



SPECS



WARNING LIGHT FOR SPEED CONTROL >20 M/S



NON-WOVEN BAG W/SAFETY VALVE



H13 CARTRIDGE 10.500 CM²

DATI TECNICI

GS 2/62 H

ASD015103

Codice

TECHNICAL DATA

Usage		DRY
Motor		2
Power	W	2000-2400 max
Voltage	V	220-240
Water lift	mmH ₂ O	2470
Airflow	m ³ /h	420
Tank capacity/Material	l	62/steel
Cable length	m	8,5
Filtering surface	cm ²	10,500
Sound Pressure Level (EN 60704-1; EN 60704-2-1; IEC 60335-2-69)	dB(A)	74
Diameter of accessories	mm	38
Dimensions (LxWxH)	mm	550x600x960
Weight	kg	21,0

STANDARD EQUIPMENT

CODICE: FTDP40006
HEPA H13 CARTRIDGE



CODICE: FTDP40008
NON-WOVEN BAG
W/SAFETY VALVE



CODICE: RCVR00936
COMPLETE CAP FOR INLET
(FOR SAFE DISPOSAL)



PMDT00565 - ACCESSORIES KIT Ø38 MM COMPOSED OF:

CODICE: TBFX28237
FLEXIBLE HOSE 2,5 M
Ø38 MM



CODICE: LAFN43048 (FOR 1 PC)
ALUMINIUM/PLASTIC
TUBE 50 CM Ø38 MM
(MACHINE COMES WITH 2PCS)



CODICE: MPVR43047
HANDLE WITH AIR
REGULATOR Ø38 MM



CODICE: SPPV43050
DUST TOOL Ø38 MM



CODICE: SPPV00156
FLAT LANCE Ø38 mm



CODICE: SPPV43052
ROUND BRUSH Ø38 mm

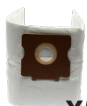


CODICE: MPVR43049
ADAPTER



OPTIONAL ACCESSORIES

CODICE: FTDP00567
MICROFIBER BAG CLASS M
SET OF 5 PCS



X5